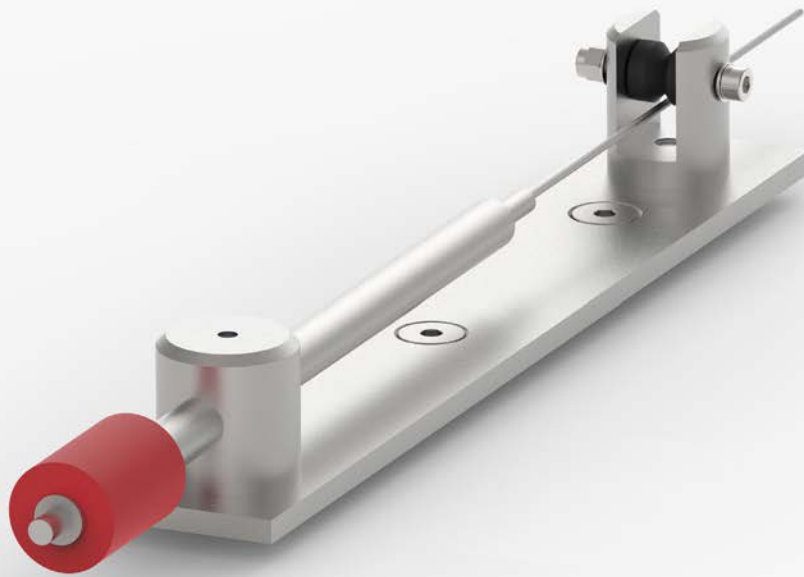


## GEO-DW300 Wire Extensometer

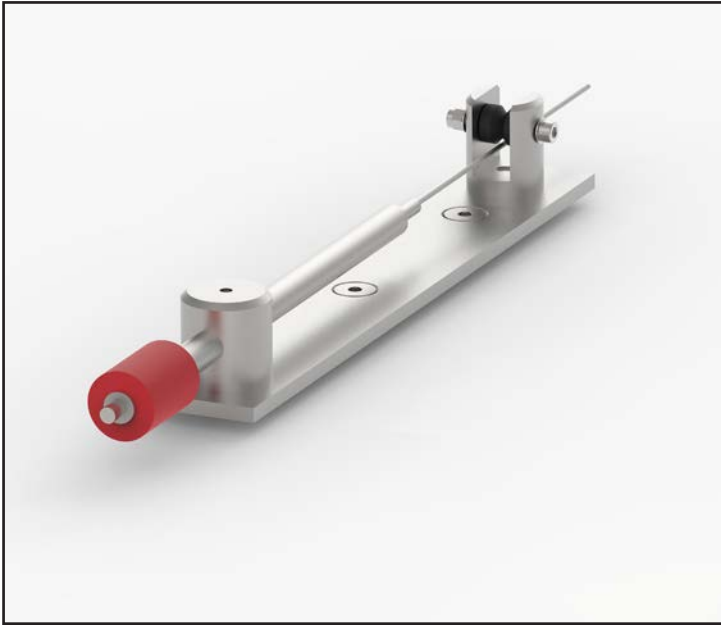
The GEO-DW300 Wire Extensometer is designed to monitor the changes in distance between two anchor points and is complete with vibrating wire transducer



# GEO-DW300 Wire Extensometer



## Overview



The GEO-DW300 Wire Extensometer is designed to monitor the changes in distance between two anchor points and is complete with vibrating wire displacement transducer. A stainless steel wire connects the transducer to the opposing anchor.

The mounting plate holds the transducer at one end and a pulley at the other end. A stainless steel wire connects the transducer to the opposing anchor. The pulley allows the transducer and anchor to be mounted on different planes, including perpendicular surfaces, up to 10m apart. The spring-loaded transducer keeps the steel wire tensioned.

Typical applications include monitoring cracks or displacements in civil structures.

### APPLICATIONS

For monitoring displacements and convergence in:

Structural joints

Landslides

Rock movements

Walls

### FEATURES

Displacement range up to 100mm

Wire extendable up to 10 metres

Simple to install

VW output

Rugged construction

Compatible with WI-SOS 480 wireless system



# GEO-DW300 Wire Extensometer

## Specifications

	GEO-DW301	GEO-DW302	GEO-DW303	GEO-DW304
Range	25 mm	50 mm	75 mm	100mm
<b>PERFORMANCE</b>				
Resolution	<0.025% FS			
Accuracy	±0.1% FS			
Nonlinearity	<0.5% FS			
<b>ELECTRICAL</b>				
Frequency range	1650-2700 Hz			
Nominal zero value	1850 Hz			
<b>MECHANICAL</b>				
Operating temperature range	-20 °C to +80°C			
Body & plate material	Stainless steel			
Inner rod	Stainless steel			
O-ring	Viton			
Wire	Stainless Steel, Ø 1 mm, linear thermal expansion $12.5 \times 10^{-6} / ^\circ\text{C} / \text{m}$			
Waterproof rating	IP68 (16 bar)			
Cable	2 pair PUR sheath			
Cable Type	Type 900 - VW Sensor with Foil Screen & Drain Wire			
<b>ORDERING INFORMATION</b>				
Range				
Anchor type				
Readout type				



Geosense Ltd, Nova House, Rougham Industrial Estate, Rougham, Bury St Edmunds, Suffolk IP30 9ND, England

[www.geosense.co.uk](http://www.geosense.co.uk) e [sales@geosense.co.uk](mailto:sales@geosense.co.uk) t +44(0)1359 270457

Specifications are subject to change without notice and should not be construed as a commitment by Geosense. Geosense assumes no responsibility for any errors that may appear in this document. In no event shall Geosense be liable for incidental or consequential damages arising from the use of this document or the systems described in this document. All Content published or distributed by Geosense is made available for the purposes of general information. You are not permitted to publish our content or make any commercial use of our content without our express written consent. This material or any portion of this material may not be reproduced, duplicated, copied, sold, resold, edited, or modified without our express written consent.

V1.3 06/2023