

Technologies for seismology, engineering and geophysics

The GeoExplorer suite includes various modules for recording and processing geophysical data.

Designed to be fully integrated with our tools, it provides high interoperability between the various modules for cross-checking of modeling and various tools for data quality control.

The GE DH module, thanks to its complete synergy with GE DoReMi and the DoReMi© seismograph with the SS-BH-5C sensor, allows complete control over the dataset to be processed, also generating various 1D models.

For more information: www.sara.pg.it or info@sara.pg.it

- Recording data with GE DoReMi allows you to load the entire dataset with one click inside the DH module, speeding up the processing process and minimizing the risk of errors in the geometries.

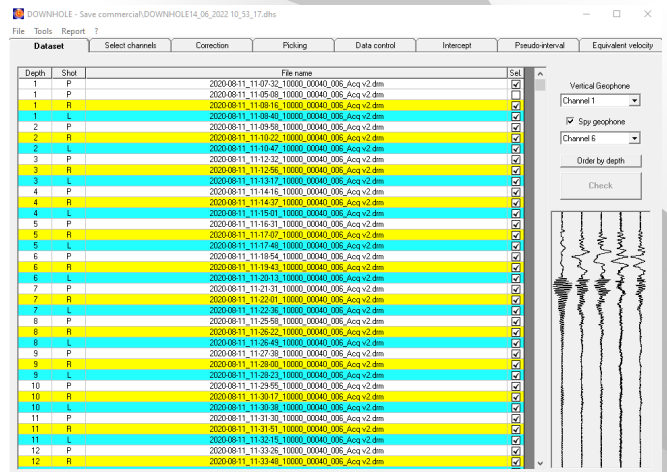
The layout follows a logic that helps the processing experience and ensures complete control over the entire process and the final results, always allowing the operator to evaluate and apply the best choices based on the analyzed geological context, making the module versatile and flexible.

The possibility to analyze the various horizontal channels and possible phase oppositions, the ability to evaluate the arrival times at the geophone spy and the possible correction methodology, allow for minimizing interpretive errors.

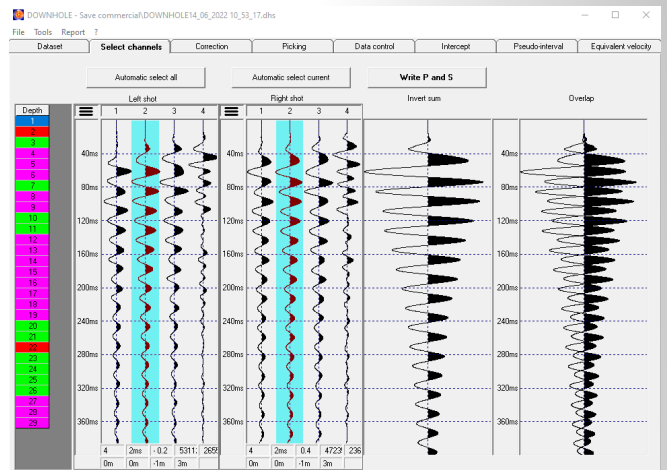
Saving the dataset and the work state allows for different processing and processing and interpretation flows, allowing for backups at various processing steps.

- The software allows the processing of the dataset using the intercept method independently for P and S waves, and use the pseudo-interval and equivalent velocity technique, also calculating various geotechnical data.

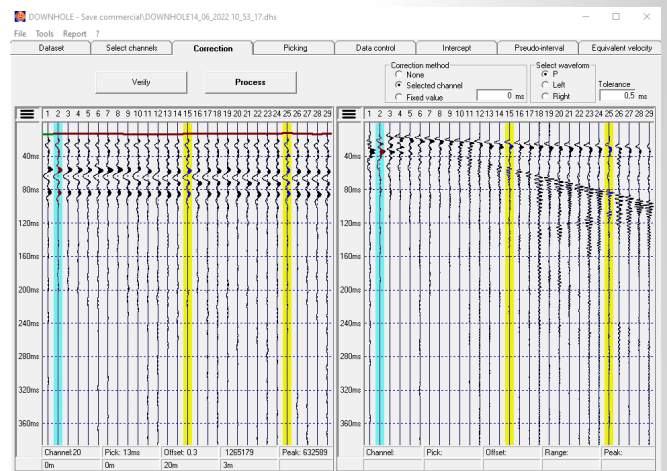
- The GeoExplorer suite requires a Windows PC.



Tab Dataset, preview of selected seismogram and selection of P channel and surface geophone



Horizontal selection tab



Correction tab for P and S shots by surface geophone

Dataset management:

- Independent vertical and horizontal geometries
- Channel selection for vertical and spy geophone
- Automatic and manual selection for S component
- Down-top dataset mirroring

Pre-processing dataset and quality check:

- Spy geophone picking and correction for trigger error
- Cross-checking for P and S picking

Elaboration method:

- Intercept elaboration
- Pseudo-interval method
- Pseudo-equivalent method
- Vs30 and Vs equivalent

Additional tools :

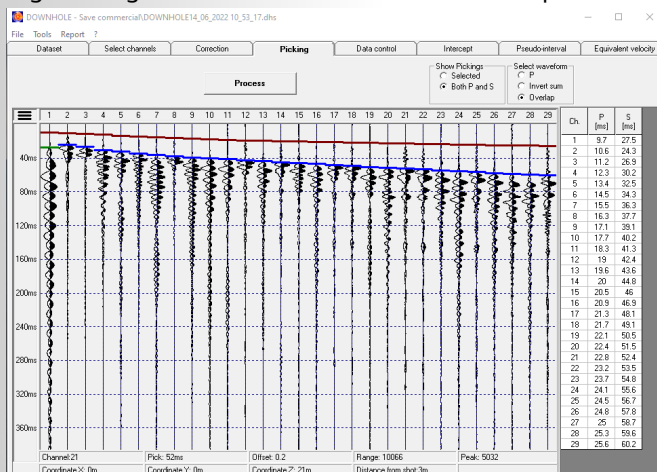
- Poisson's ratio
- Geophysical density
- Shear modulus
- Young modulus
- Bulk modulus

The module does not require third-party software for graphical representations and it is possible to export each single image and table displayed.

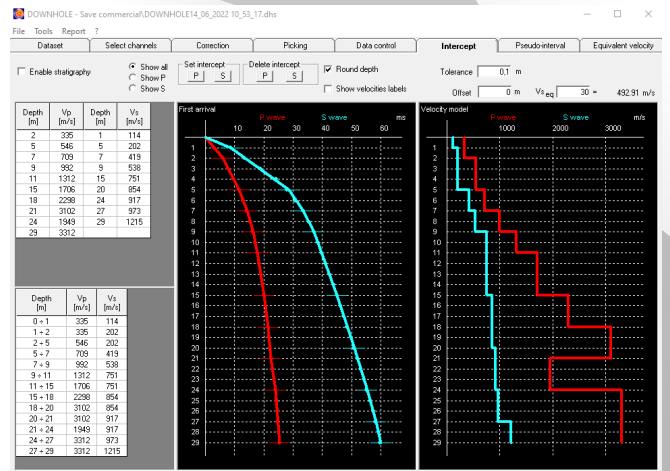
The supported formats are:

- .drm
- .segj
- .seg2

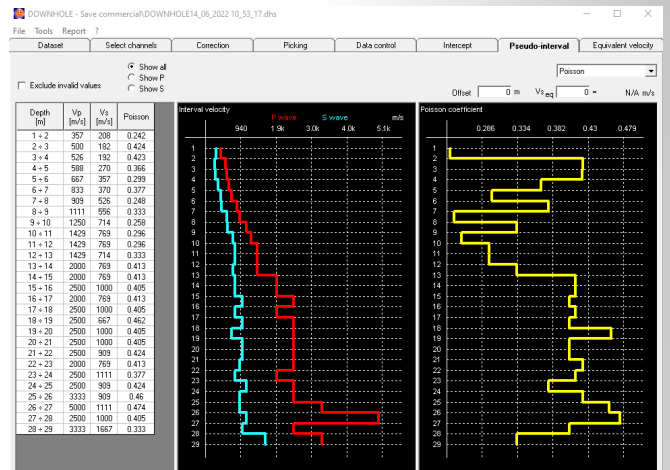
SARA electronic instruments s.r.l. is constantly looking for new solutions, implementations and optimizations for the GeoExplorer Suite, providing a high level of customer support and gathering customer feedback for the Suite improvement.



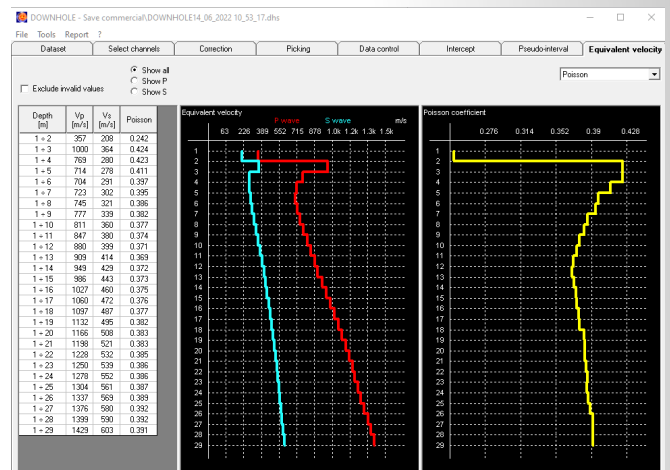
Picking tab and cross-checking P over S picking



Intercept tab and Vs30 or Vs equivalent velocity computation



Pseudo-interval tab and Vs30 or Vs equivalent velocity computation



Pseudo-equivalent tab

Notice! This paper is an information leaflet only; it is published without programmed updates. All specifications, features and prices are subjected to changes without any prior notice. In the event of any discrepancies between this document and a commercial offer or bidding document, these latter will take precedence.

