

Technologies for seismology, engineering and geophysics

The GeoExplorer suite includes various modules for recording and processing geophysical data.

Designed to be fully integrated with our tools, it provides high interoperability between the various modules for cross-checking of modeling and various tools for data quality control.

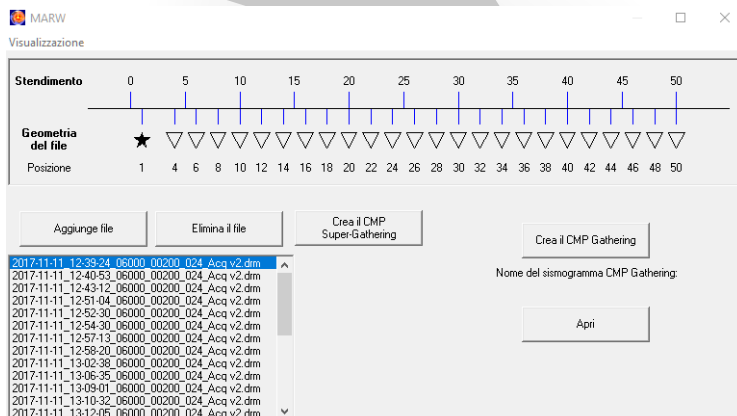
The GE MARW module, thanks to its complete synergy with GE DoReMi and the DoReMi[®] seismograph, allows complete control over the dataset to be processed, generating a 1D model from the CSG (Common Shot Gather), from CMP (Common Mid Point) and from the super-gather.

For more information: www.sara.pg.it or info@sara.pg.it

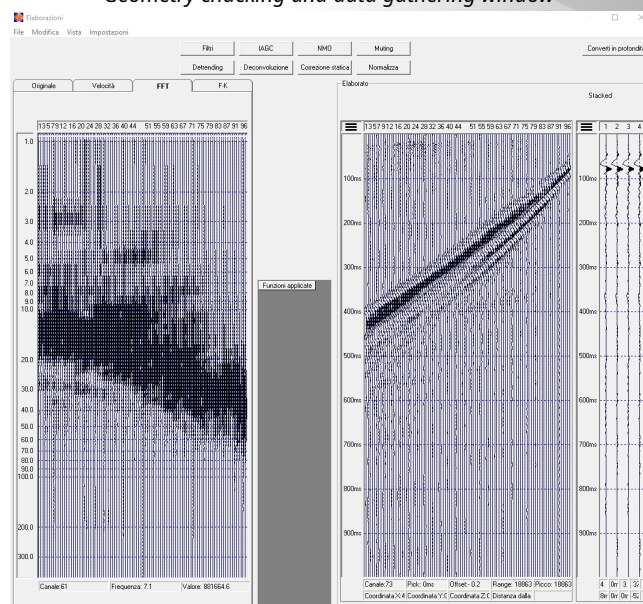
- ◆ The GeoExplorer DoReMi has a designed tool with an easy-to-use interface for data acquisition and to facilitate quality check. After data acquisition, you can perform a complete analysis of the CSG, or perform a complete analysis after the CMP data gathering or the super gathering.

- ◆ The processing leads to a 1D velocity model for soil characterization, reaching depths that are difficult to reach with standard techniques.

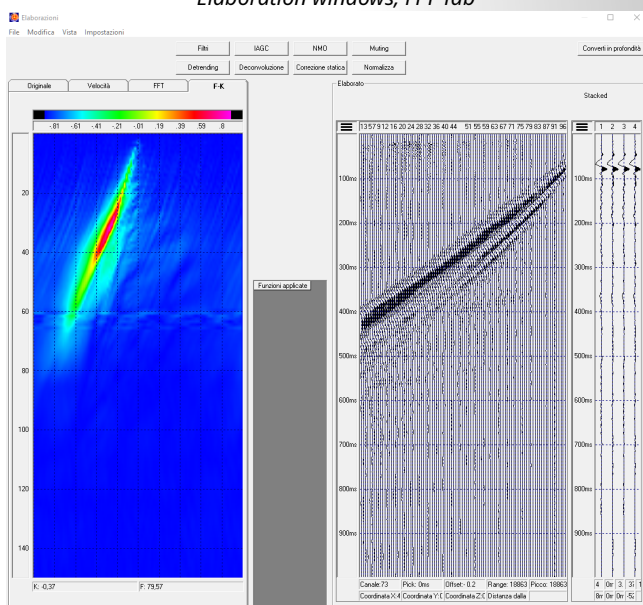
- ◆ The GeoExplorer suite requires a Windows PC.



Geometry checking and data gathering window



Elaboration windows, FFT Tab



Elaboration windows, FK Tab

Seismograms management:

- Seismogram display
- Geometry management of the single shot
- CMP gathering
- Super gather
- Move channel
- Auto offset
- Custom offset

Processing:

- FFT single channel
- Filters (bandpass, highpass, lowpass)
- IAGC (Instantaneous Automatic Gain Control)
- Muting
- Detrending
- Spiking Deconvolution
- Predictive deconvolution
- Static correction
- Signal normalization
- FK spectrum
- Velocity semblance
- NMO correction
- Depth conversion

Additional tools:

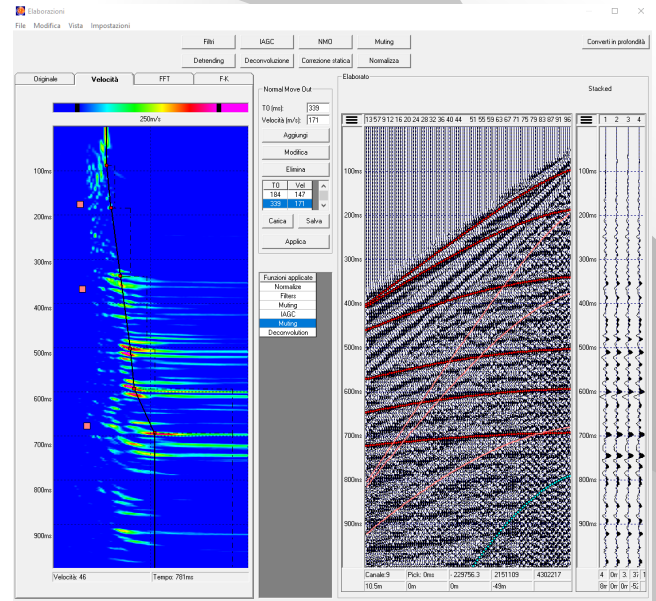
- PDF report with notes and photos
- Work save and backup

The module does not require third-party software for graphical representations and it is possible to export each single image and table displayed.

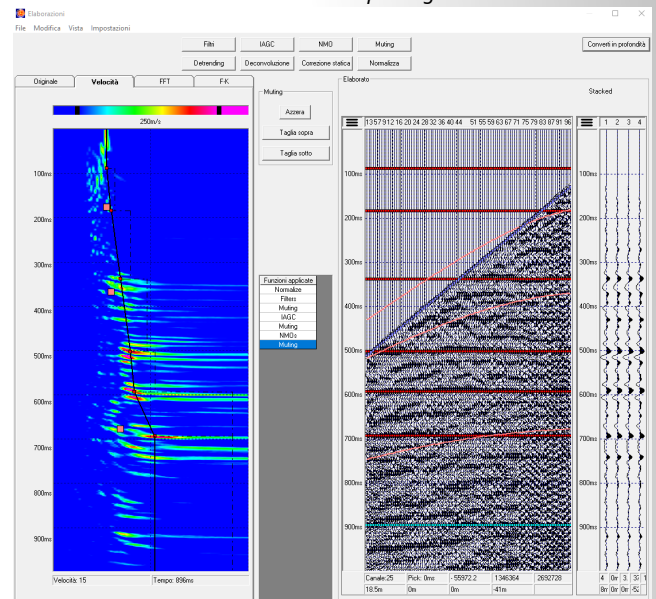
The supported formats are:

- .drm
- .segj
- .seg2

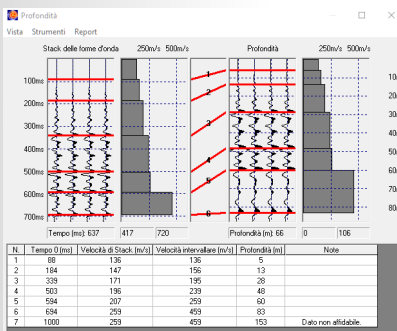
SARA electronic instruments s.r.l. is constantly looking for new solutions, implementations and optimizations for the GeoExplorer Suite, providing a high level of customer support and gathering customer feedback for the improvement of the Suite.



NMO Tab with picking



NMO correction applied



Depth conversion window result

Notice! This paper is an information leaflet only; it is published without programmed updates. All specifications, features and prices are subjected to changes without any prior notice. In the event of any discrepancies between this document and a commercial offer or bidding document, these latter will take precedence.